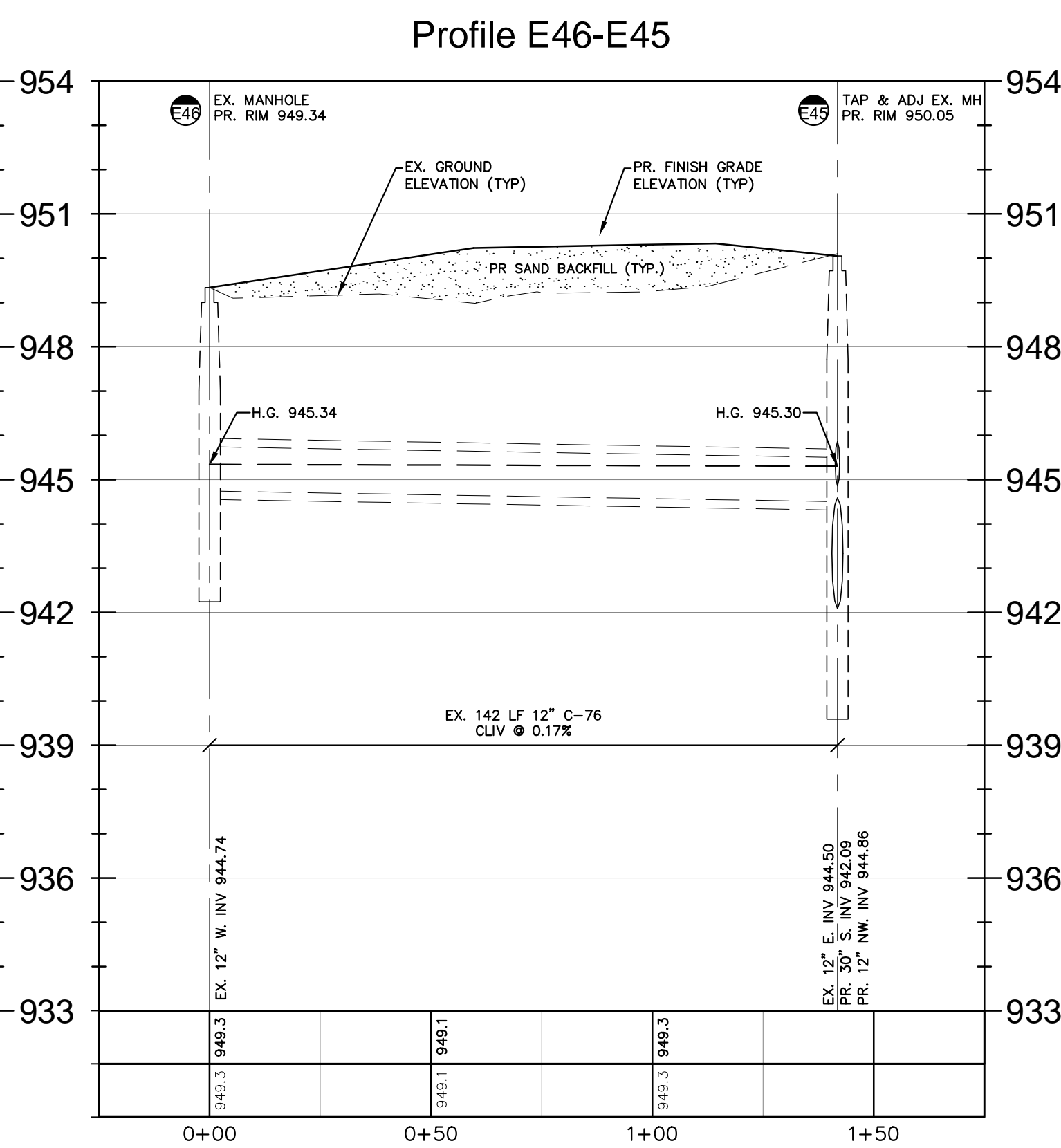
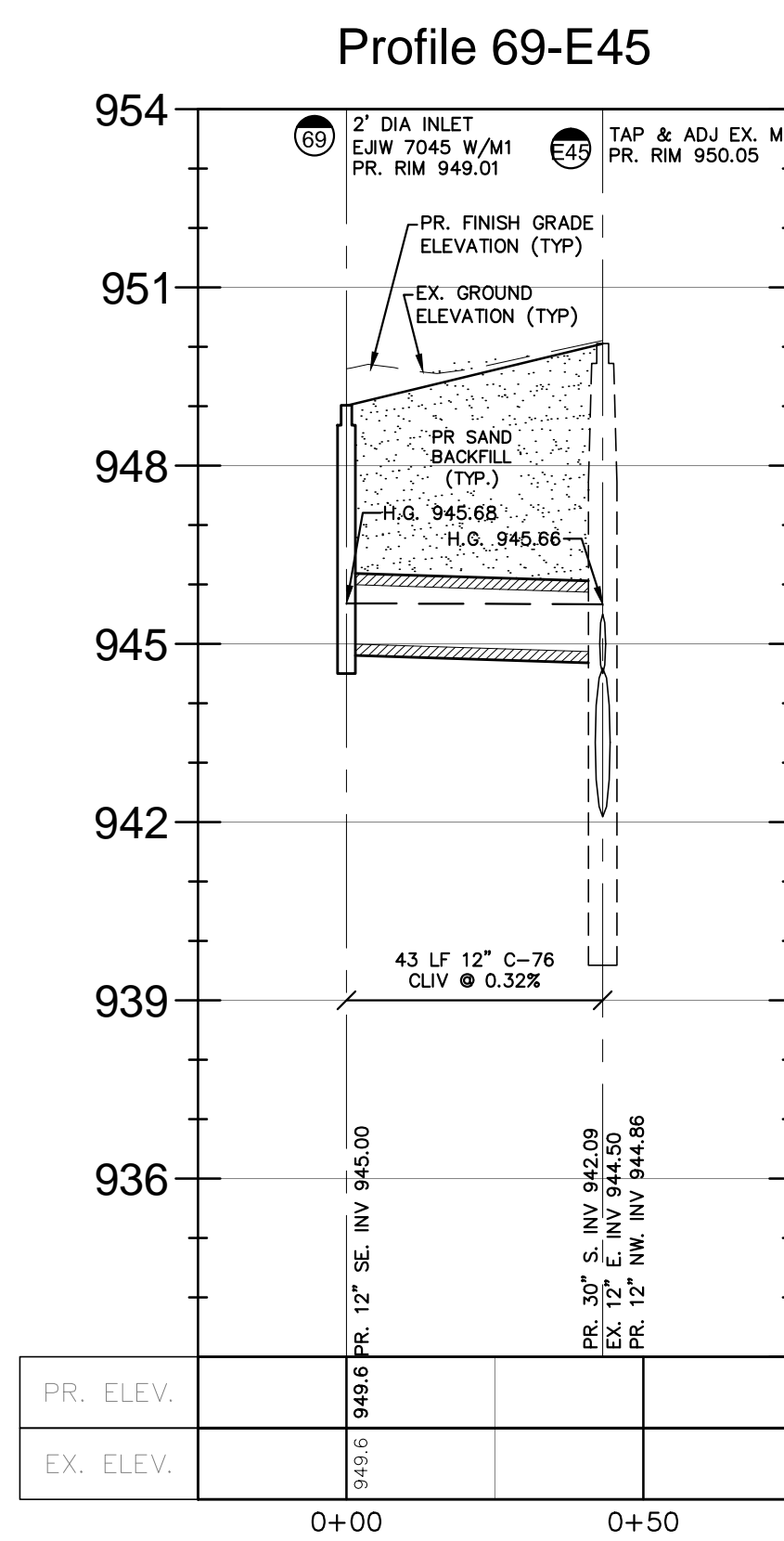


Storm Sewer Structure Schedule	
Structure Name	Structure Details
#72 4" DIA MH EJW 1040 TYPE A	PR. RIM 950.55 PR. 18" S. INV. 942.68 PR. 18" NE. INV. 942.68 PR. 12" NW. INV. 945.90
#E47 TAP & ADJUST EX. MH	PR. RIM 950.50 EX. 24" E. INV. 942.49 EX. 24" W. INV. 944.95 PR. 18" N. INV. 942.60

Storm Sewer Structure Schedule	
Structure Name	Structure Details
#71 4" DIA CB W/2" SUMP EJWW 5105	PR. RIM 949.20 EX. 24" S. INV. 946.30
#E49 TAP & ADJUST EX. MH	PR. RIM 950.02 EX. 24" E. INV. 945.95 EX. 24" N. INV. 946.10 EX. 12" S. INV. 946.40

Storm Sewer Structure Schedule	
Structure Name	Structure Details
#E49 TAP & ADJUST EX. MH	PR. RIM 950.02 EX. 24" E. INV. 945.95 EX. 24" N. INV. 946.10 EX. 12" S. INV. 946.40
#E49b ADJ EX. CB	PR. RIM 950.74 EX. 12" N. INV. 946.48 EX. 12" S. INV. 946.48
#E49c CLEAN OUT	PR. RIM 951.50 EX. 12" N. INV. 946.65

Storm Sewer Structure Schedule	
Structure Name	Structure Details
#E48 ADJ EX. MH	PR. RIM 950.02 EX. 24" E. INV. 945.06 EX. 24" W. INV. 945.40 EX. 12" N. INV. 945.95 EX. 12" S. INV. 945.95
#E49 TAP & ADJUST EX. MH	PR. RIM 950.02 EX. 24" E. INV. 945.95 EX. 24" N. INV. 946.10 EX. 12" S. INV. 946.40



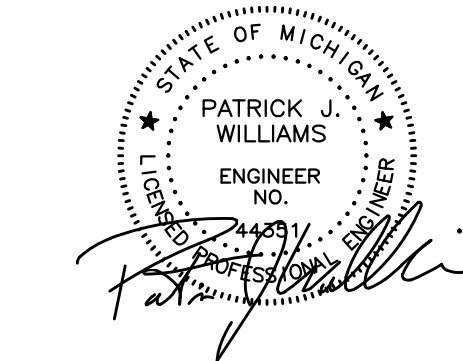
Storm Sewer Structure Schedule	
Structure Name	Structure Details
#70 CONST. 4' DIA CB W/2 SUMP ON EX. 12" STORM EJ1W S105	PR. RIM 950.29 EX. 12" S. INV. 946.14
#E45 TAP & ADJ EX. MH	PR. RIM 950.05 PR. 30" S. INV. 942.09 EX. 12" E. INV. 944.50 EX. 12" NV. INV. 944.8
#E47 TAP & ADJUST EX. MH	PR. RIM 950.50 EX. 24" E. INV. 942.49 EX. 24" W. INV. 944.95 PR. 18" N. INV. 942.60
#E48 ADJ EX. MH	PR. RIM 950.20 EX. 24" E. INV. 945.06 EX. 24" W. INV. 945.40 EX. 12" N. INV. 945.95 EX. 12" S. INV. 945.95

Storm Sewer Structure Schedule	
Structure Name	Structure Details
#69 2' DIA INLET EJW 7045 W/M1	PR. RIM 949.01 PR. 12" SE. INV. 945.00
#E45 TAP & ADJ EX. MH	PR. RIM 950.05 PR. 30" S. INV. 942.09 EX. 12" E. INV. 944.50 PR. 12" NW. INV. 944.80

Storm Sewer Structure Schedule	
Structure Name	Structure Details
#E45 TAP & ADJ EX. MH	PR. RIM 950.05 PR. 30" S. INV. 942.09 EX. 12" E. INV. 944.50 PR. 12" NW. INV. 944.8
#E46 EX. MANHOLE	PR. RIM 949.34 EX. 12" W. INV. 944.74



SEAI



PROJECT
Village at Bloomfield

CLIENT
REDICO
One Towne Square,
Suite 1600
Southfield, MI 48076

Contact:
--
Phone: (248) 784-6486

PROJECT LOCATION
Part of the W. 1/2 of Section 5,
T. 2N., R. 10E., and part of the
NE 1/4 of Section 6, T. 2N., R.
10E., Bloomfield Township, The
City of Pontiac and Bloomfield
Township (conditionally
transferred to The City of
Pontiac) Oakland County,
Michigan

SHEET
District 3
Storm Sewer Profiles



Know what's **below**
Call before you dig.

DATE	ISSUED / REVISED
05-12-17	Bids / Permits

DRAWN BY:

A. Wiseman

DESIGNED BY:

A Wiseman

APPROVED BY:

P. Williams

F. Williams
DATE:

DATE: 02-16-17

03-16-17
SCALE:

SCALE: $1'' = 30$

A horizontal number line with tick marks at 30, 15, and 0. The segment between 15 and 0 is shaded black.

NFE JOB NO
411625

SHEET NO. 622

A116-21

C-39